

15, was hurled to death today when he was struck by a train. Williams' 10-year-old brother and an unidentified man, who was on the trestle, escaped death by lying flat on the ties until the train had passed.

Miss Helen Browne, daughter of Mr. and Mrs. William H. Browne, of New York, Senator Dupuy acquired a great interest in American affairs, especially politics and journalism.

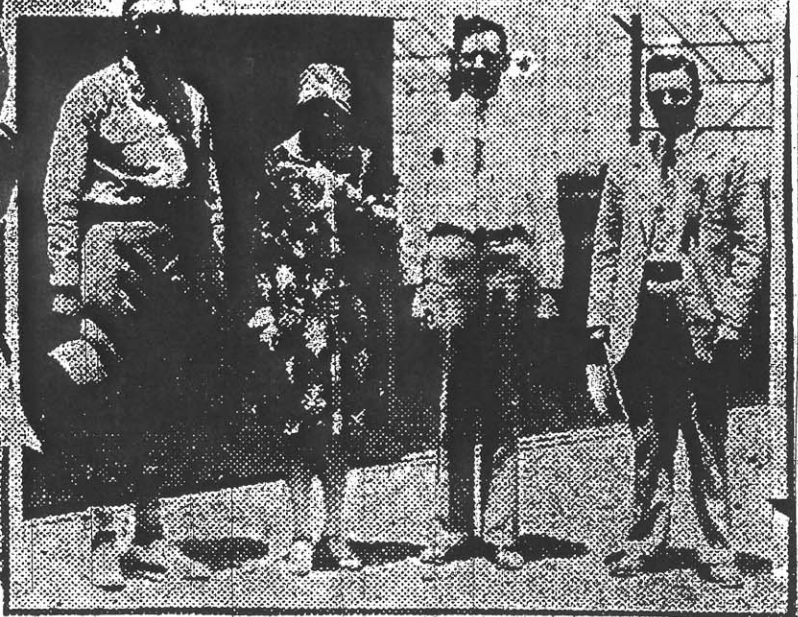
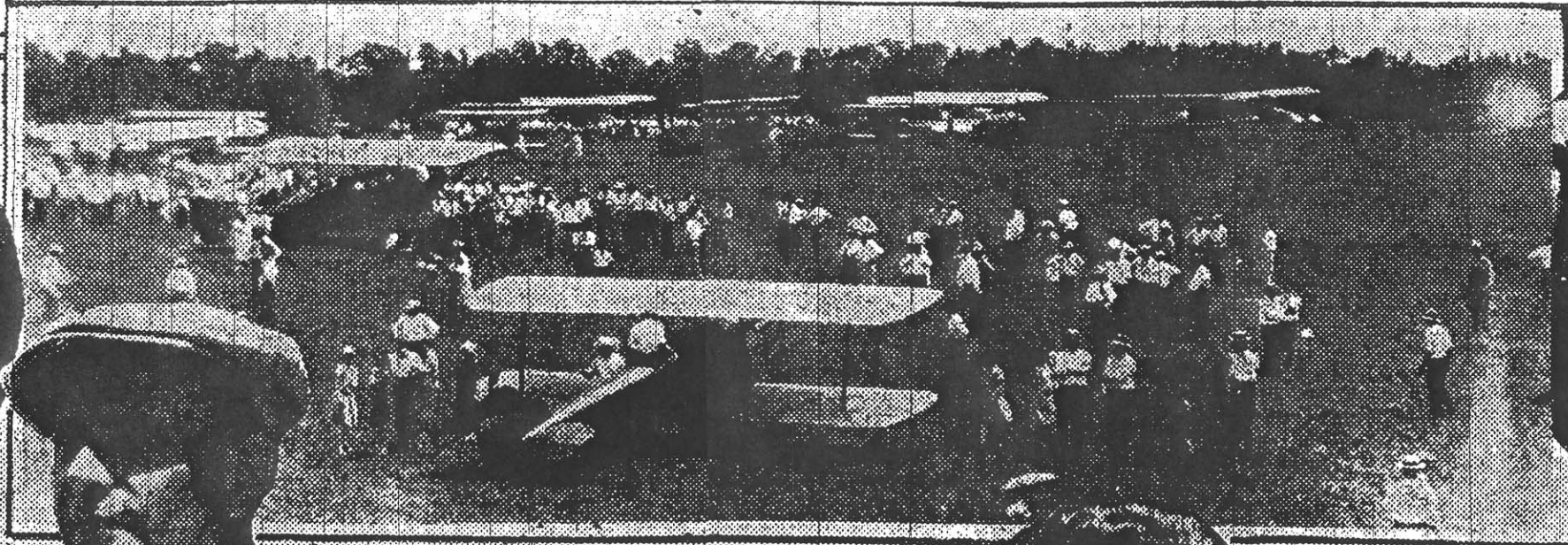
At the same time the floor leader emphasized that he was ready to contribute to any movement that would help the flood sufferers and would not oppose an extra session if any good could be accomplished.

KANSAS — Partly cloudy Monday and Tuesday, somewhat unsettled in west portion; not much change in temperature.

one of the passengers, a correspondent of the Kent Press service. The other passengers were Mrs. (Continued on Page 2)

for public inspection for a week before it is demolished to make room for an apartment building, it was announced today. Proceeds from an admission charge will be contributed to charity.

WHEN AIR CARAVAN SWOOPED DOWN ON WICHITA YESTERDAY



SOME idea of the huge crowd which greeted the National Air tour on its arrival in Wichita, Sunday noon, may be gained from the pictures above. The upper of the two large views shows the planes in the tour lining up for their take-off for Omaha, the next stop. Below is a general view of a portion of the crowd inspecting the planes, just before noon. In the upper left corner is Miss Marie Krebs, one of The Eagle bathing beauties who greeted the fliers, with "Whirlwind Jimmy," the tiny monkey mascot of Henry Meyers' Waco plane. Upper right is Mrs. Ralph Hawks, who is taking her honeymoon in the plane piloted by her husband, which is of the same general design and same make as that in which Colonel Charles Lindbergh made his New York to Paris flight—a Ryan monoplane. In the lower right corner is a group of Crosley folk—R. P. Crawley, from the factory; W. E. Titus, president of the Radio Corporation of Kansas, Crosley distributors; Mrs. John Paul Riddle, wife of the pilot of the Crosley "Stork," and Harry E. Sherwin. Upper insert is H. C. Mummert, who is holding second place in the tour with his Mercury plane. Lower is Lieut. L. G. Meister, who is flying a Buhl ship. Both of these men took part in the tour last year.

Le
A

I
A.
pa
the
say
flig
hir
pil
on

I
of
gir
mo
at
He
Yo
wit
sar
ret

I
bet
his
hun
Ar
F
ma
dor
She
En
M
Par
exp
a c
the

I

Rej

V
incl
lect
last
two
by t
sho
831,
was
witl
T
sou
685,
T
tre
prev
subj
tod
port
Cert
inas
have
dere